



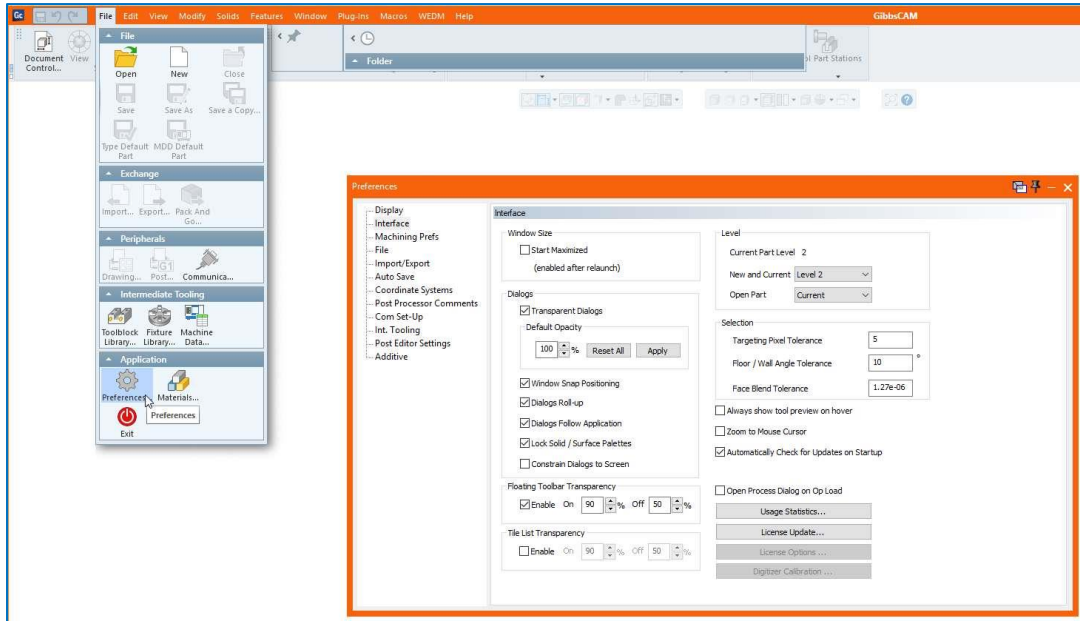
# GibbsCAM Registration Instructions



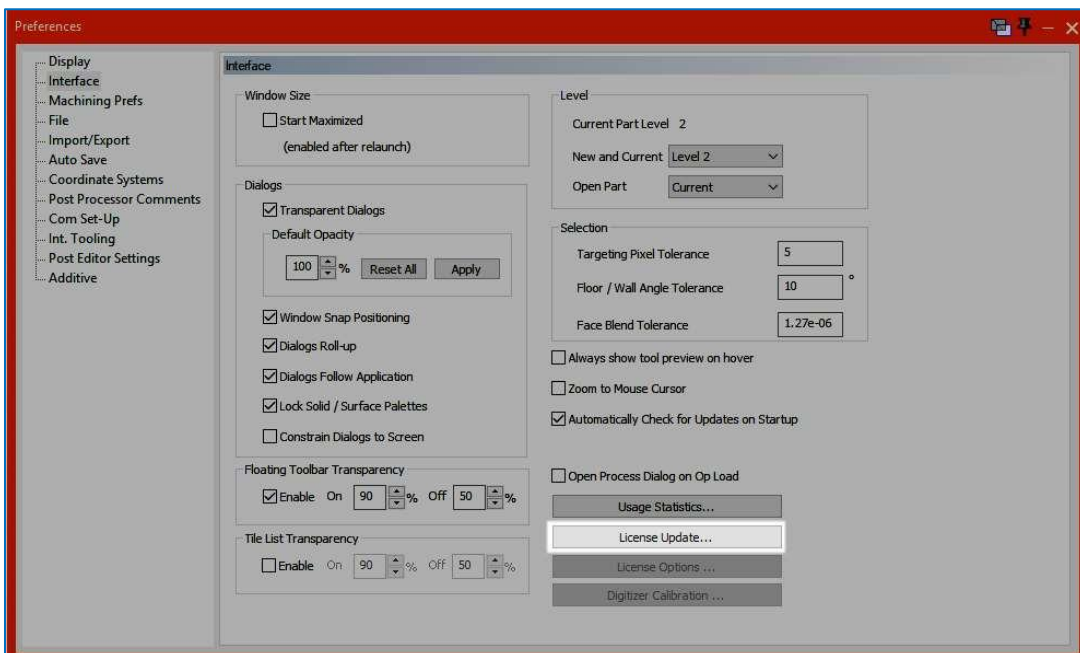
# If you are currently able to launch GibbsCAM

(if you are adding modules or updating license for other reason)

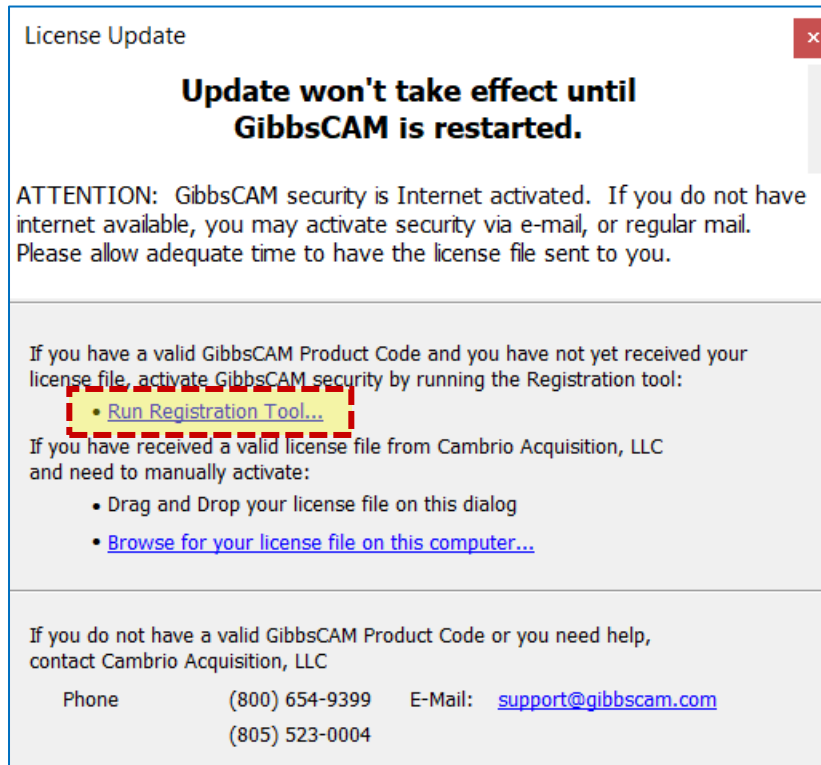
- 1) Launch GibbsCAM.
- 2) Navigate to **File > Preferences > Interface**



- 3) Click on the **License Update** button.



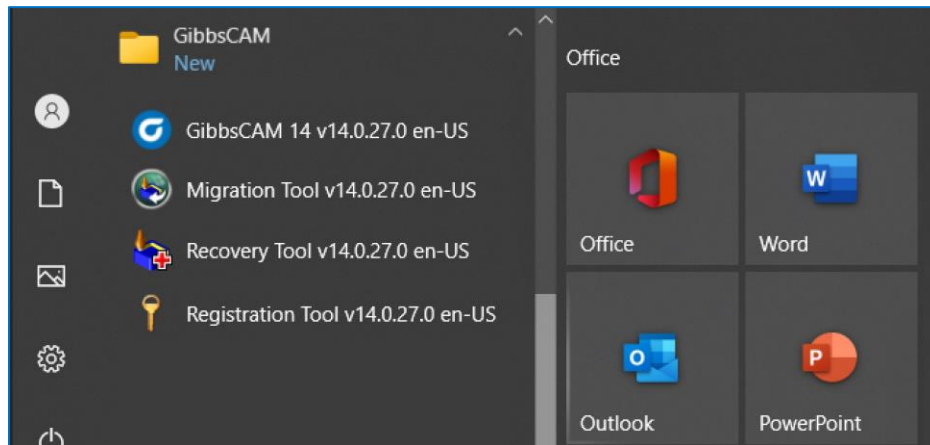
4) Select Run **Registration Tool** and follow the prompts.



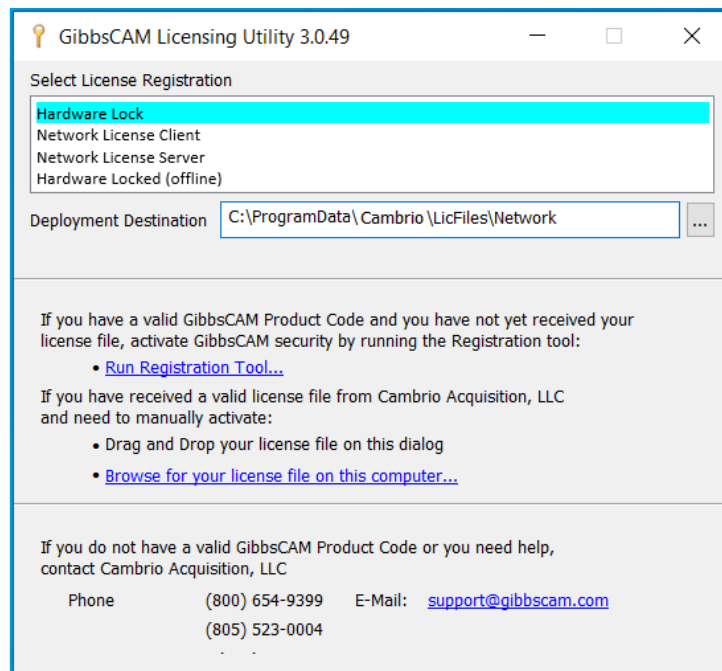
5) Restart GibbsCAM.

## If you cannot launch GibbsCAM at this time

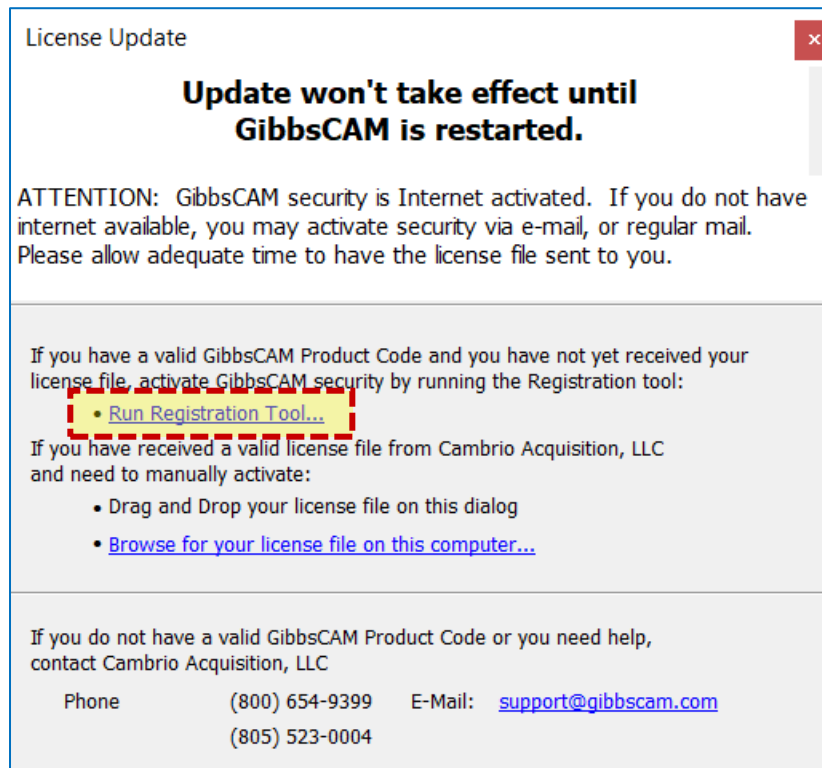
1) Click on the Windows icon to open the Start Menu and navigate to **GibbsCAM > Registration Tool vx.x.x**



2) Select the appropriate license type (hardware locked if you have a key or temporary license. Network License Client for NLO).



3) Select Run **Registration Tool** and follow the prompts.



**Note:** GibbsCAM does not support activation over remote desktop